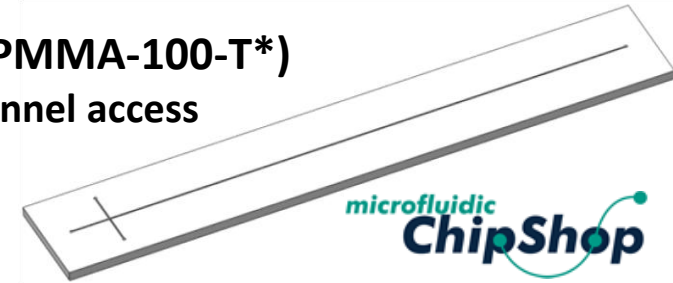


MICROFLUIDIC CHIP

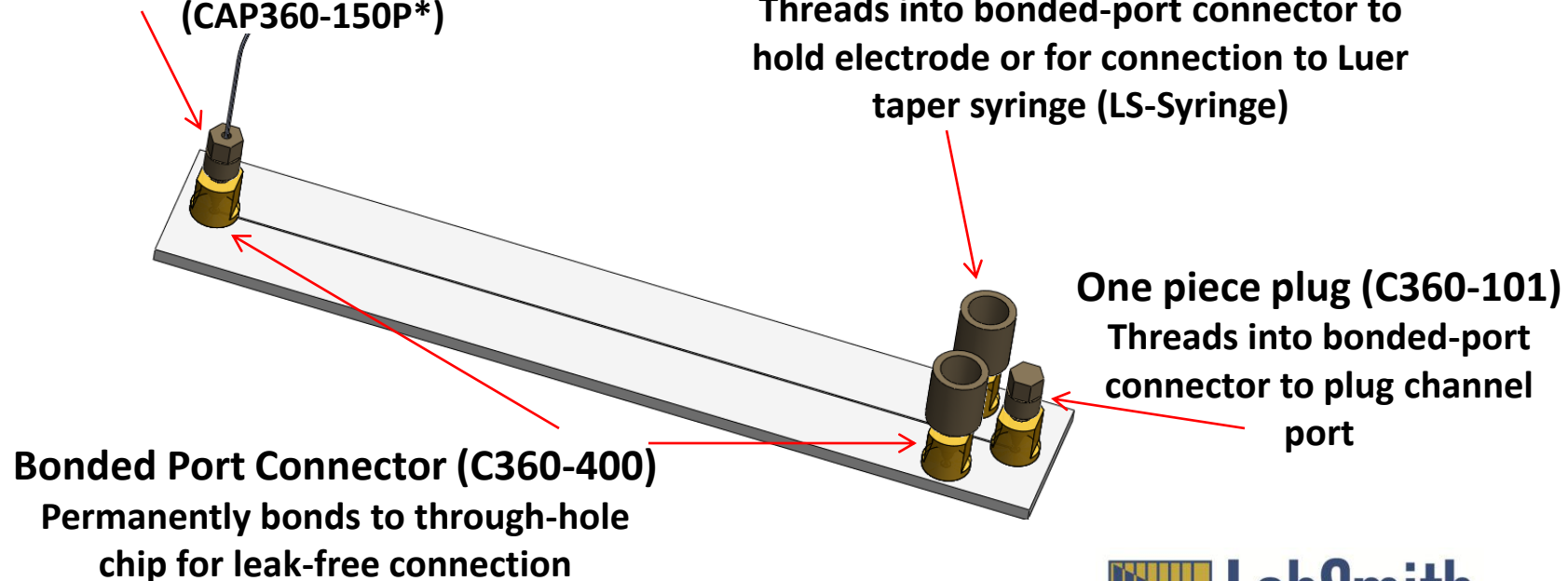
Through-Hole Chip Assembly

ChipShop Through-Hole Cross Chip (P/N: CROSS-PMMA-100-T*)
Chip has 0.8 mm diameter holes in the top plate for channel access



One piece fitting (C360-100)
Threads into bonded-port connector
for connection to capillary tubing
(CAP360-150P*)

On-Chip Reservoir (C360-405R)
Threads into bonded-port connector to
hold electrode or for connection to Luer
taper syringe (LS-Syringe)



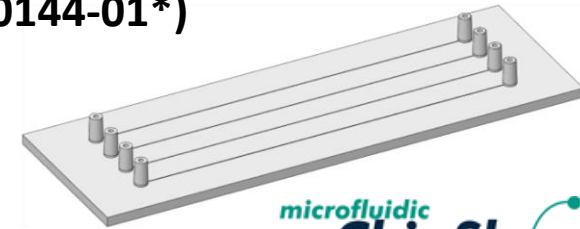
*Contact LabSmith for other compatible components

MICROFLUIDIC CHIP

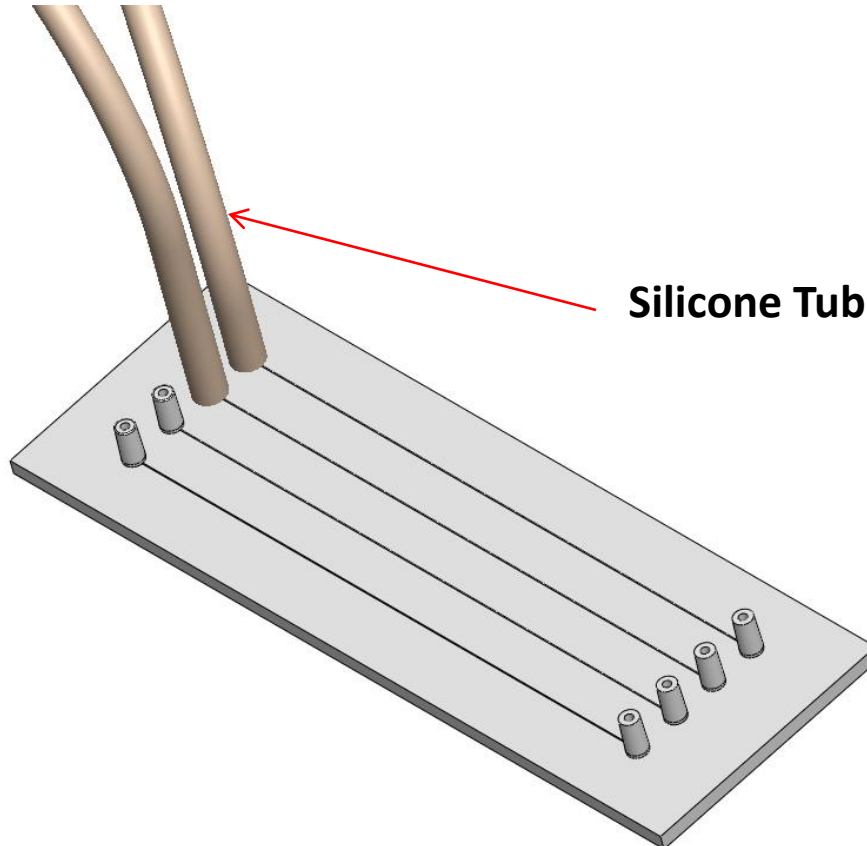
Olive Chip Assembly

ChipShop Straight Channel Olive Chip (P/N: 01-0186-0144-01*)

Tubing slides directly over olive connection for leak-free connections up to 42 psi (3 bar)



microfluidic
ChipShop



Silicone Tubing (P/N: TUBE108-116SIL*)
1/16 ID, 1/8 OD

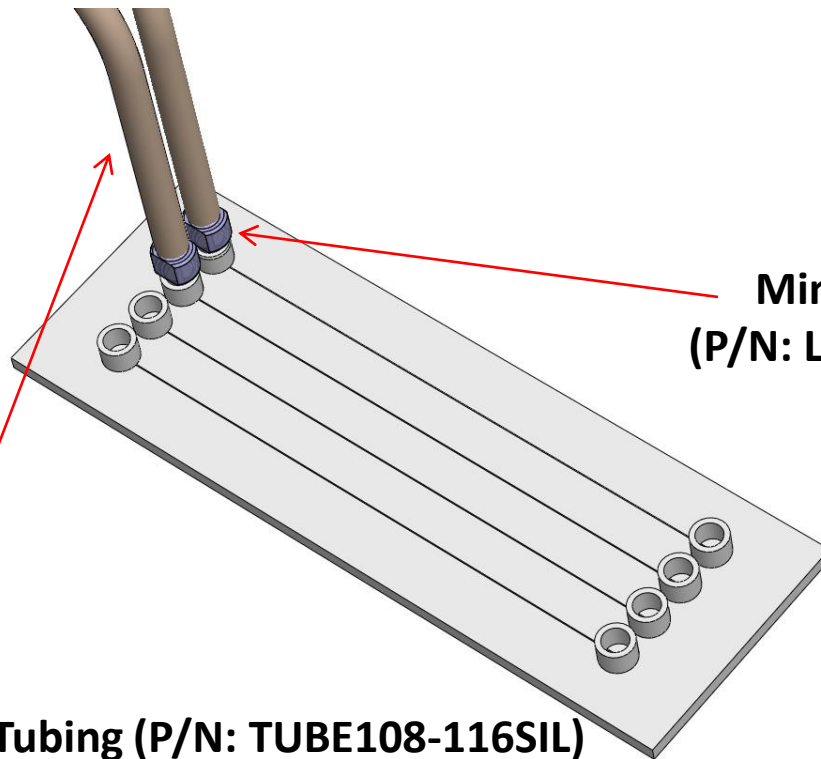
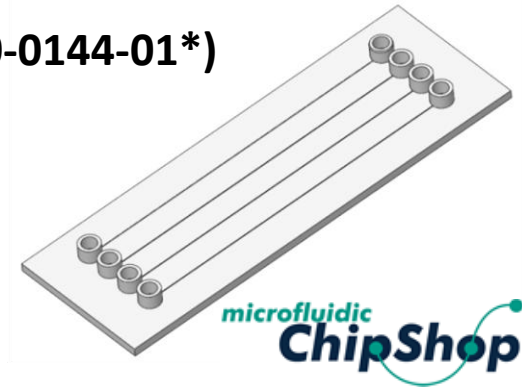
 **LabSmith**
TOOLS FOR SCIENCE

*Contact LabSmith for similar compatible components

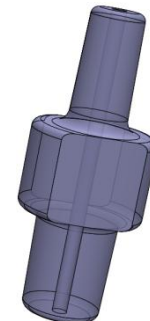
MICROFLUIDIC CHIP

Mini Luer Chip Assembly

ChipShop Straight Channel Mini Luer Chip (P/N: 01-0170-0144-01*)
Uses Mini Luer Connectors to interface with tubing



Mini Luer Connector
(P/N: LS-ML-CONNECTOR*)



Silicone Tubing (P/N: TUBE108-116SIL)
1/16 ID, 1/8 OD

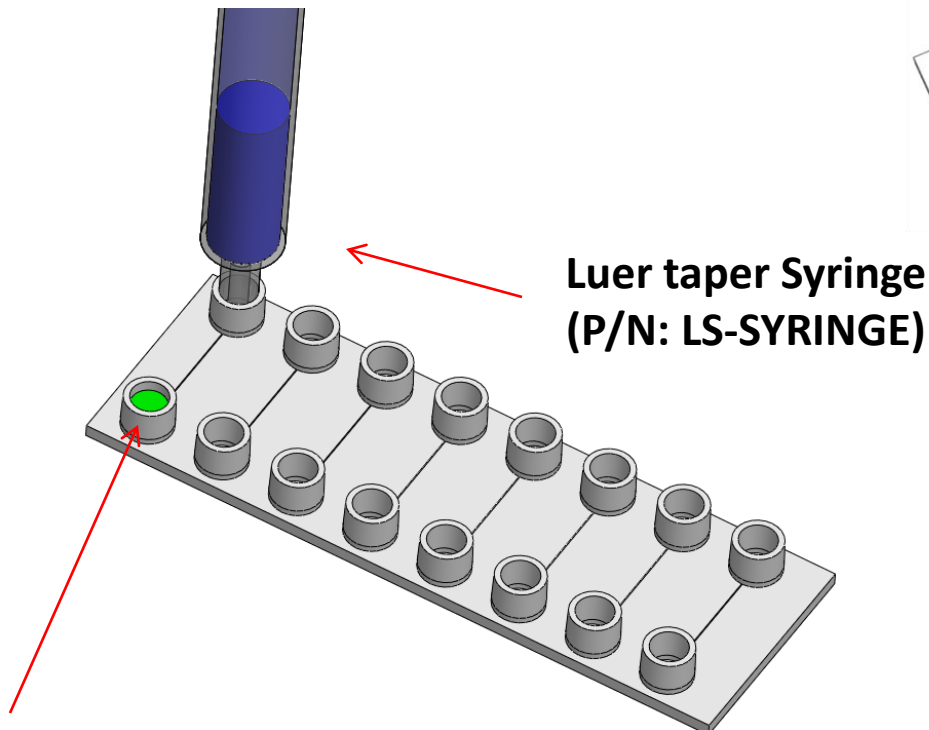
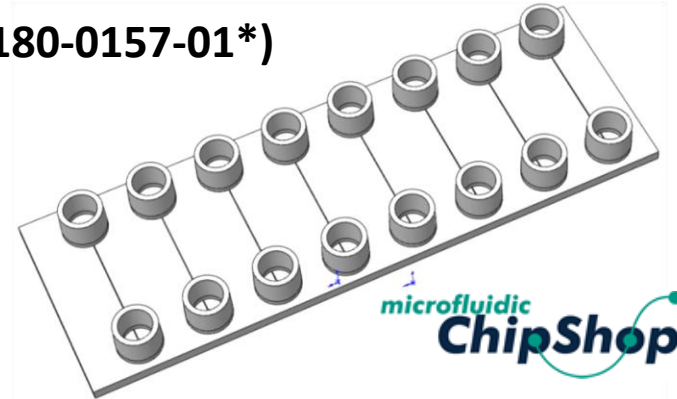


***Contact LabSmith for similar compatible components**

MICROFLUIDIC CHIP

Luer Chip Assembly

ChipShop Straight Channel Luer Chip (P/N: 01-0180-0157-01*)



Luer taper Syringe
(P/N: LS-SYRINGE)

Luer ports can be used
as fluid reservoirs;
Volume ~ 50 μ l



*Contact LabSmith for similar compatible components